

SNAP-Ed Innovates during the COVID-19 Pandemic: Infographic Template Tips for Customization

How to customize the top of your template:

- Insert your agency logo in the top left corner.
- Underneath the title, insert a agency-specific statement
- Change colors, font, etc. to customize for your agency or SNAP-Ed program

SNAP-Ed Innovates During the COVID-19 Pandemic Supporting Healthy Food Choices and Promoting Physical Activity

Insert a state-specific statement here describing the program/implementing agency theory of change and pandemic context, etc. here.

Main layout of template:

Columns:

1. Challenges faced during COVID-19,
2. How challenges were overcome, and
3. Results of those solutions.

Rows:

1. Direct Education (DE),
2. Policy, Systems, and Environmental (PSE), and
3. Sectors of Influence.

You can adjust use of rows and columns. For instance, you could include use all three rows for DE examples or 1 DE and 2 PSE, etc.

Challenge	Solution	Results
Direct Education		
Common challenges for DE work were program site closures, distancing, and elimination of food/cooking tastings/demos.	Corresponding solution could include virtual teaching, new partnerships, indirect resources or channels developed, etc.	Corresponding reach
Policy, Systems, and Environmental Change Interventions		
Common challenges will relate to food access and/or food security decreasing, physical activity opportunities decreasing.	Corresponding solutions could include new or expanded programming at places where people shop or play.	Corresponding results could be a quote, photo, individual reached, number of new partnerships developed, nutrition and physical activity supports adopted.
Sectors of Influence		
This could be community, regional, or state level challenges.	Solutions could relate to activating collaborations to address current challenges.	Corresponding results could include the number of multi-level collaborations.

Content in text boxes:

- Change text for your narrative.
- Add icons, photos, and/or quotes to help illustrate.
- Examples of icons, quote boxes, and other design possibilities are placed around the document and can be dragged to the template.

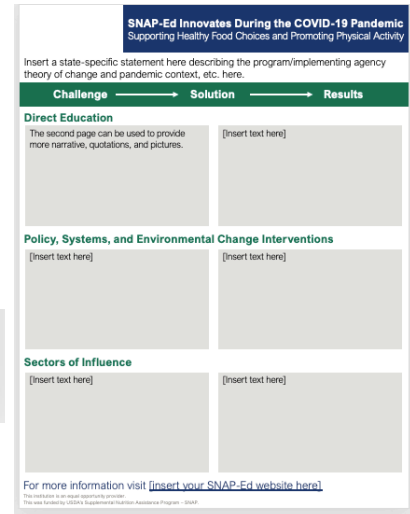
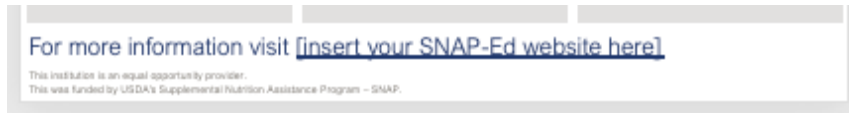
Insert icons as appropriate

Different square options to exchange

Option: Omit sectors of influence and move PSE info to the third row and input pictures and quotes into row 2.

Customize the bottom and decide on 2nd page

- Provide a link to your SNAP-Ed website at the bottom for a cue to action. The non-discrimination and credit statements have already been added.
- (Optional) Use page 2 to provide more information for narrative, quotes, and pictures. Note: Page 2 is set up with 6 larger text boxes instead of 9, but the columns and headers remain the same.



508 Compliance

508 compliance was considered when developing the template. After you add content and change any colors, text, sizes, etc. please check for 508 compliance. Compliance tips and trainings can be found here: <https://www.section508.gov/>. Below are some summary tips to ensure compliance:

- Text should contrast against page background.
- Multiple colors can identify differences, emphasize text, and help with content meaning.
- Heading styles can denote content organization.
- Bulleted or numbered list styles help provide content structure.
- Alternative text for images, graphs, and charts should be added.
- Descriptive titles, headers, and text can provide added context to links.
- When using tables, keep them simple and include column and row headers.