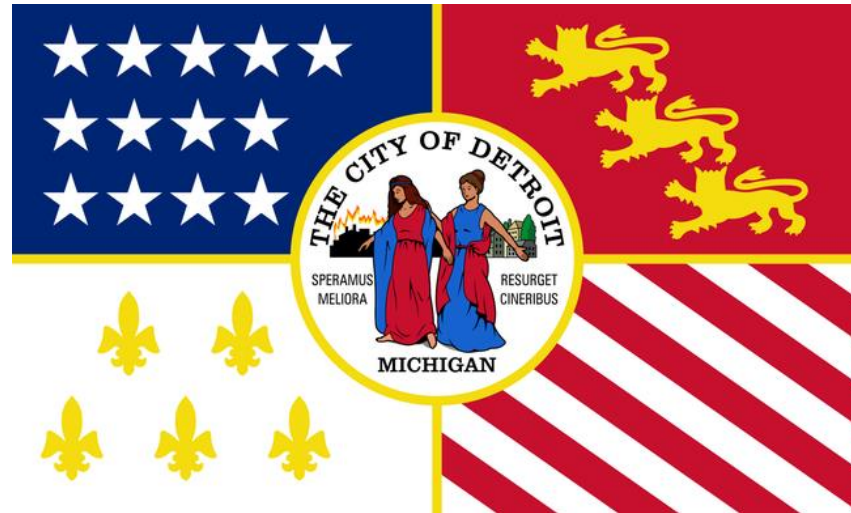
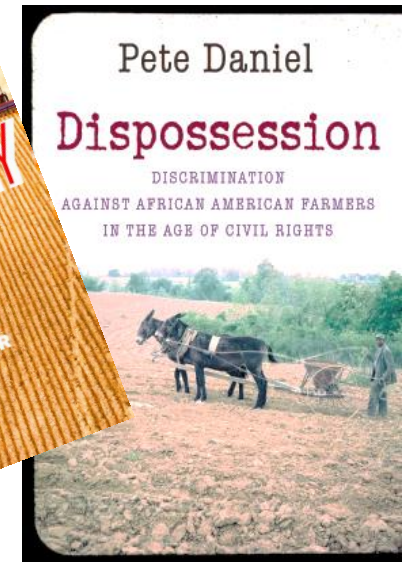
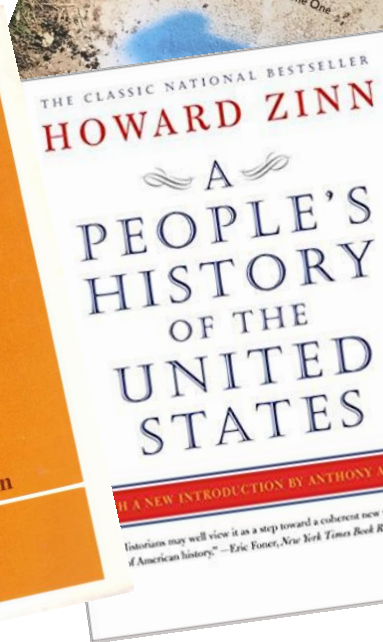
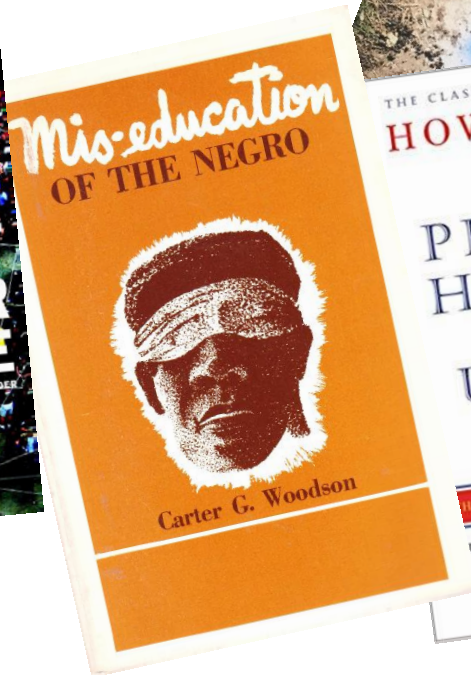
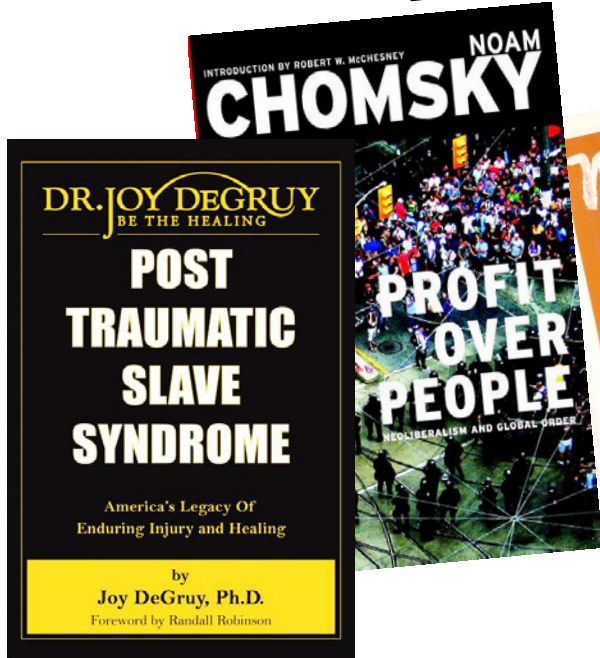
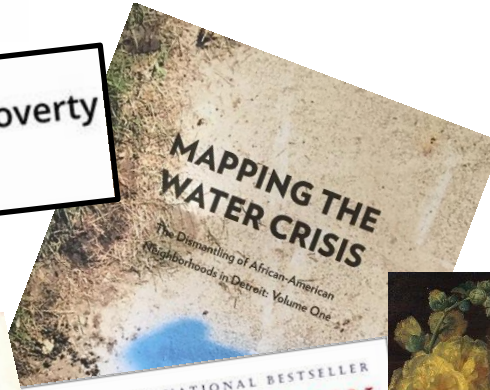
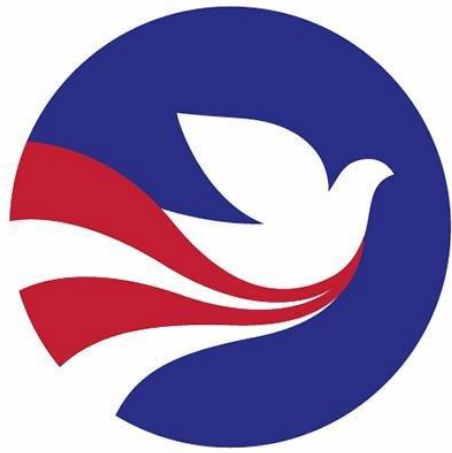


Bending the Arc Toward Justice



Striving for Social and Economic Justice in Detroit



Why is there inequality?

- Real Problems: poverty, broken education system, limited health care, poor public transit, patriarchy, racism... pollution/climate change... lack of honesty, love
- Fake solutions: creating more jobs, increasing wages a little, ignoring/neglecting root causes, more information (data, studies)



The Commons: Our Safety Net/Baseline

- What should everyone have a right to?
- Water
- Air
- Food
- Shelter
- Education
- What else? Travel, interaction, isolation, nature, health care

What is Social and Economic Justice?

- Social Justice – the capacity of an individual to be in right relationship with her community/society (same political or territorial authority)
- Economic Justice – equal opportunity in the exchange of resources
- Social justice – the ability to participate fully in the greater community
- Economic justice – the abolition of poverty
- Justice – recognition of and practice of the truth that we are all human and should all be able to express our humanity.

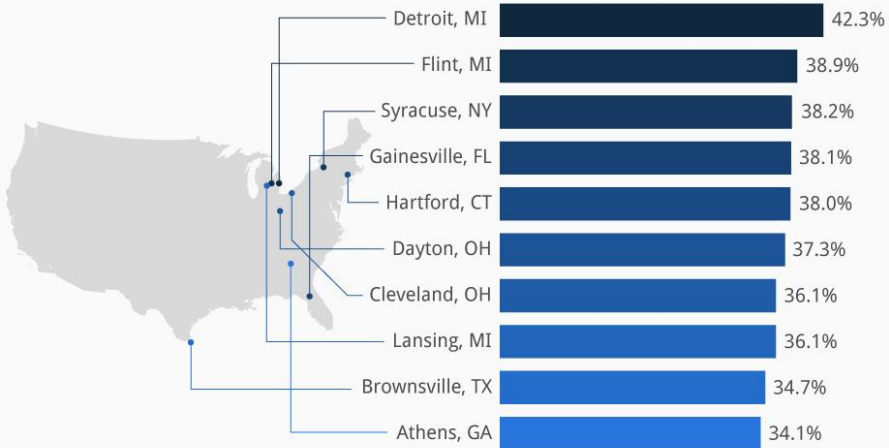
Social Justice: Not What You Think it Is – Michael Novak

As I see it, social justice requires resource equity, fairness, and respect for diversity, as well as the eradication of existing forms of social oppression. Social justice entails a "redistribution" of resources from those who have "unjustly" gained them to those who justly deserve them, and it also means creating and "ensuring" the processes of truly democratic participation in decision-making.... It seems clear that only a "decisive" redistribution of resources and decision-making power can "ensure" social justice and authentic democracy.

Joe R. Feagin, "Social Justice and Sociology: Agendas for the Twenty-First Century: Presidential Address," *American Sociological Review*, Vol. 66, No. 1 (February 2001), pp. 1-20.

Detroit Comes First For Poverty in the United States

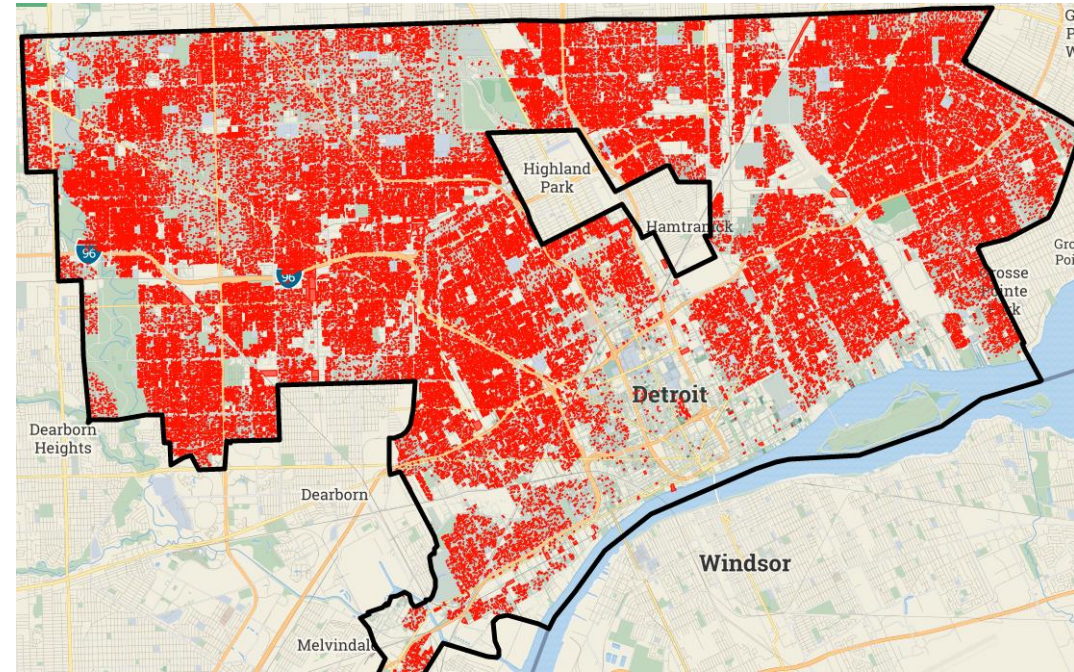
Percentage of the population below the poverty level in U.S. cities in 2014



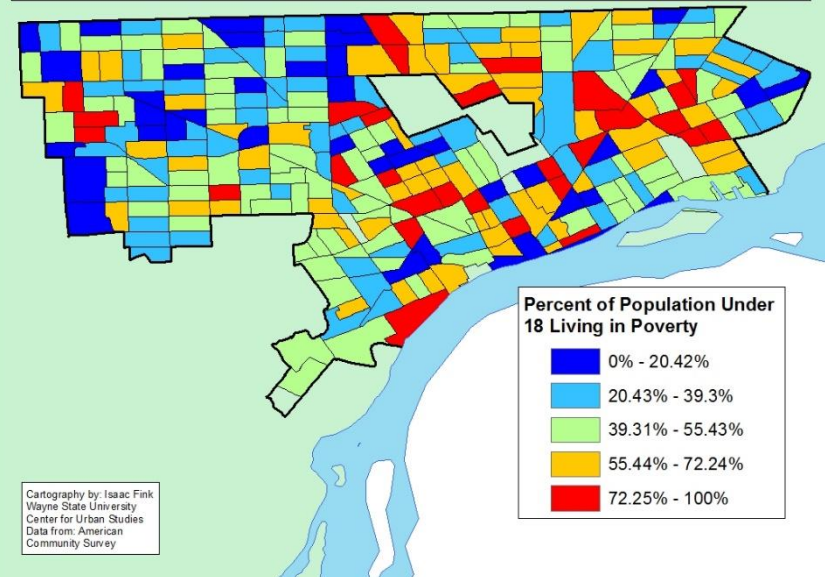
@StatistaCharts Source: Bloomberg, U.S. Census, USDA, HUD

statista

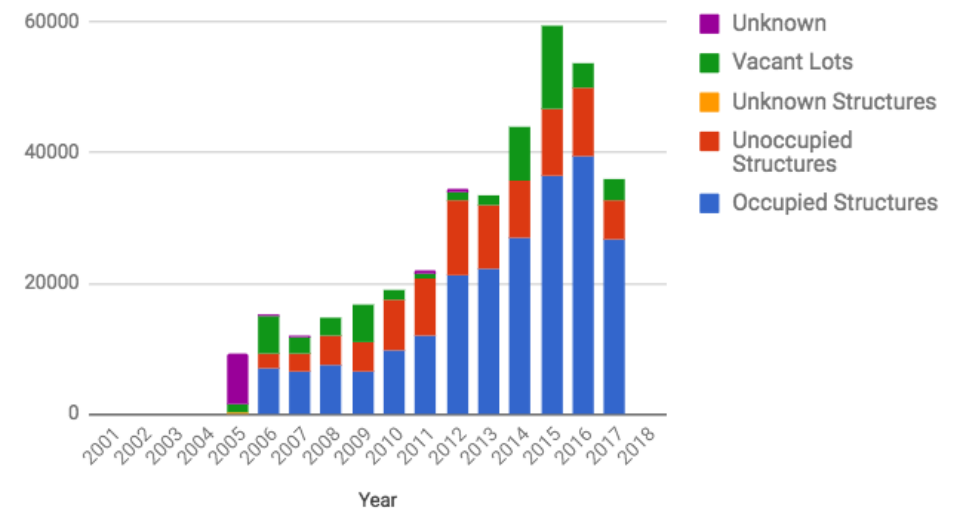
Tax foreclosures since 2002

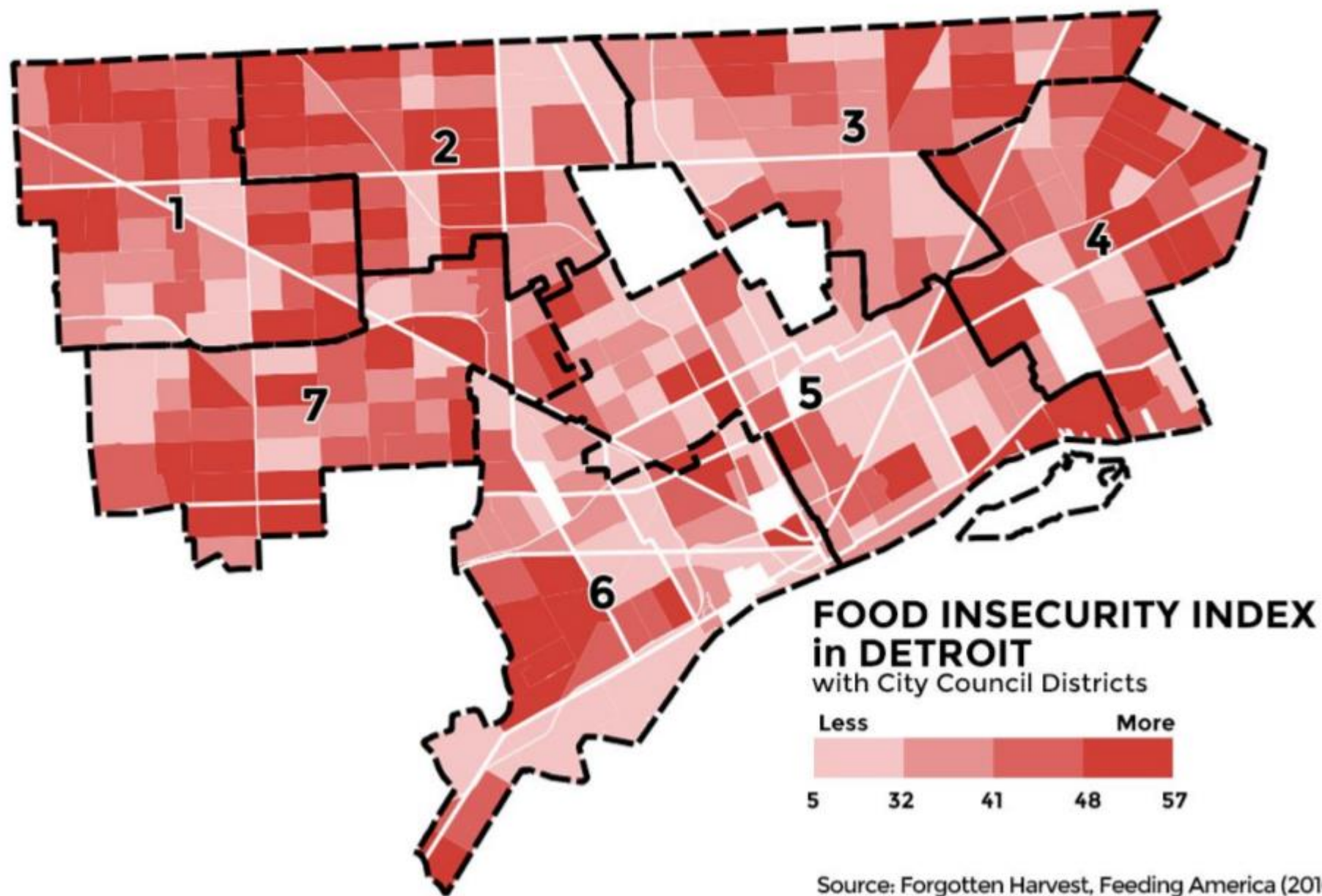


Percent of the Population Under 18 Living in Poverty in Detroit by Census Tract from 2010



Tax Foreclosure Notices By Year



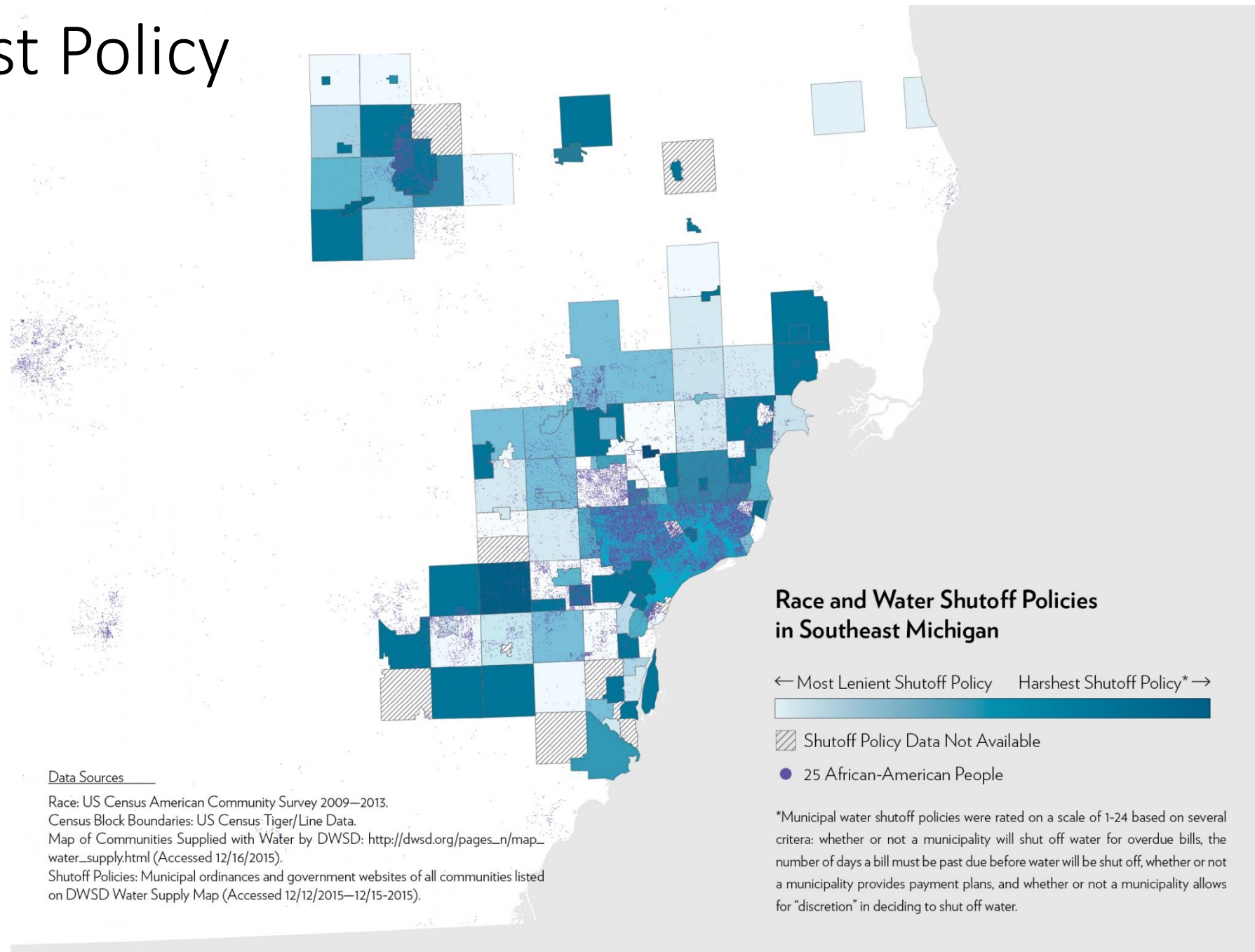


Source: Forgotten Harvest, Feeding America (2016)

Organizations: Doing the Work

- Detroit Black Community Food Security Network
- Keep Growing Detroit
- Detroit Independent Freedom Schools
- We the People of Detroit
- People's Water Board
- Detroiters Resisting Emergency Management
- Poor People's Campaign

Unjust Policy

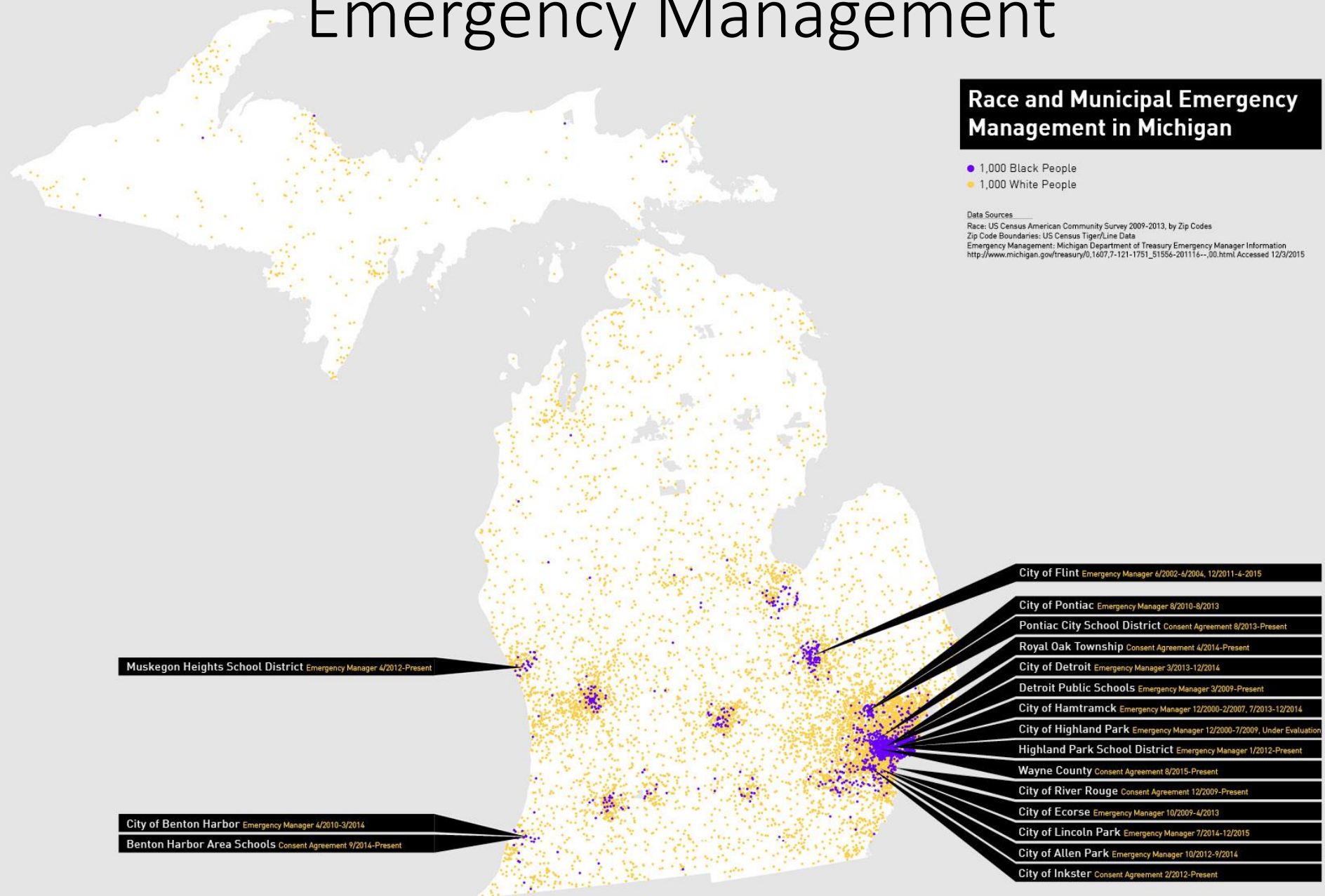


Emergency Management

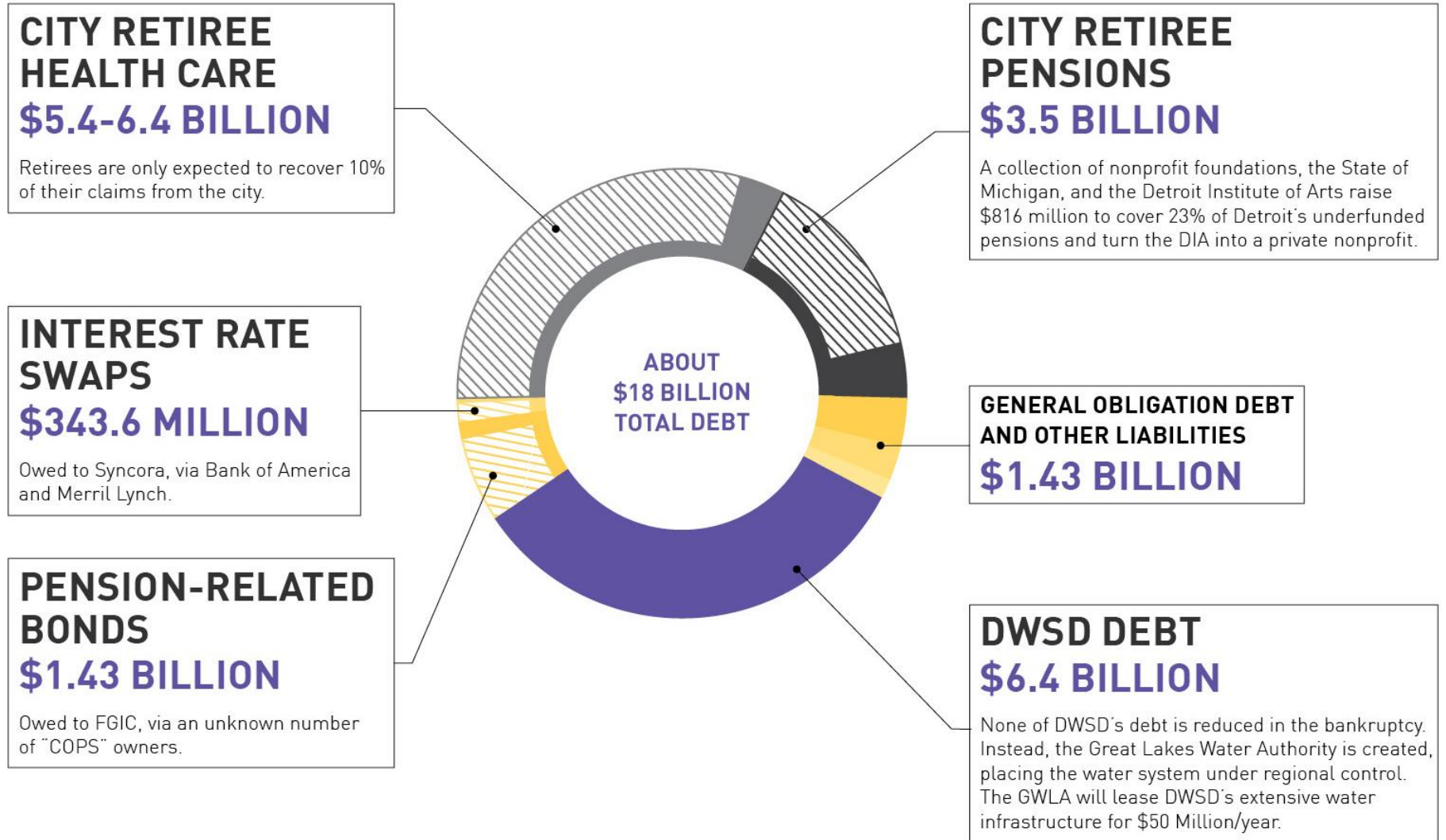
Race and Municipal Emergency Management in Michigan

- 1,000 Black People
- 1,000 White People

Data Sources:
Race: US Census American Community Survey 2009-2013, by Zip Codes
Zip Code Boundaries: US Census Tiger/Line Data
Emergency Management: Michigan Department of Treasury Emergency Manager Information
http://www.michigan.gov/treasury/0,1607,7-121-1751_51556-201116--,00.html Accessed 12/3/2015



DWSD DEBT AND THE BANKRUPTCY



DWSD Wholesale Suburban Water Rates, 2015

Data Sources

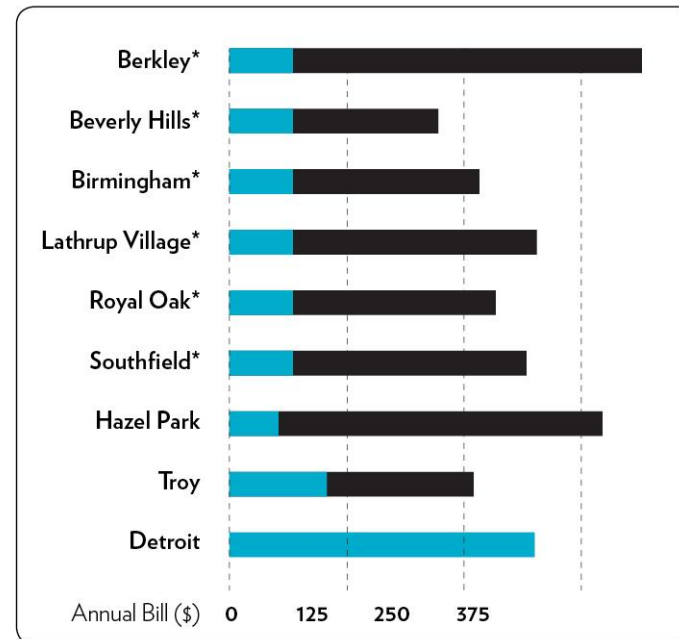
South Oakland County Water Authority (SOCWA) rate study:

<http://www.socwa.org/documents/WATRATESURVEY.pdf> (Accessed 06/10/2016).

SOCWA budget, 2014-2015: <http://www.socwa.org/documents/WABudget2014.pdf> (Accessed 06/10/2016).

DWSD rates: http://www.dwsd.org/pages_n/rate_information.html (Accessed 06/10/2016).

Suburban Water Rate Markups: Food and Water Watch.



Wholesale Rates vs. Retail Markups

Annual water service bill of a residential customer using 8,400 cubic-feet of water per year with a standard 5/8" meter. Does not include wastewater.

*Member of South Oakland County Water Authority

- Money retained by DWSD
- Money retained by suburban municipality



Effective Strategies for Justice

- Call out injustice!
- Education – culture shift
- Challenging Policy
- Connecting people locally, cooperatively
- Establishing social ties and infrastructure that build resiliency